

4.System Info

Operation panel default mode, press the button at the same time in P made sewing needle trigger select key, enter the system monitoring state through the +-key choose need to look at the project, according to the S button to enter/exit the selected projects such as the need to exit monitoring interface, according to P keys can be.

show frame numbers	Item Name	unit	show frame numbers	Item Name	unit
JJ	Plan number	piece	U5	Mechanical Angle with	limit
U1	speed of motor control	rpm	U6	Motor initial Angle	limit
U2	Motor Current	0.01A	U7	Master control program version	/
U3	Motor Voltage	V	U8	Head type	/
U4	Pedal voltage	0.01V	vEr	Operation box version of the program	/

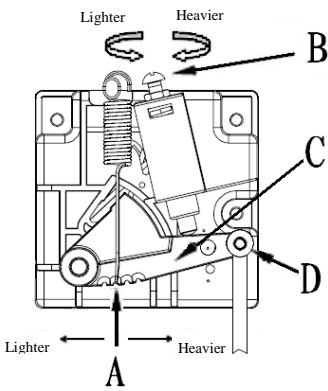
5.appearance and Adjustment

5.1 Motor classification



Direct drive motor

5.2 Pedal Installation and adjustmentPedal



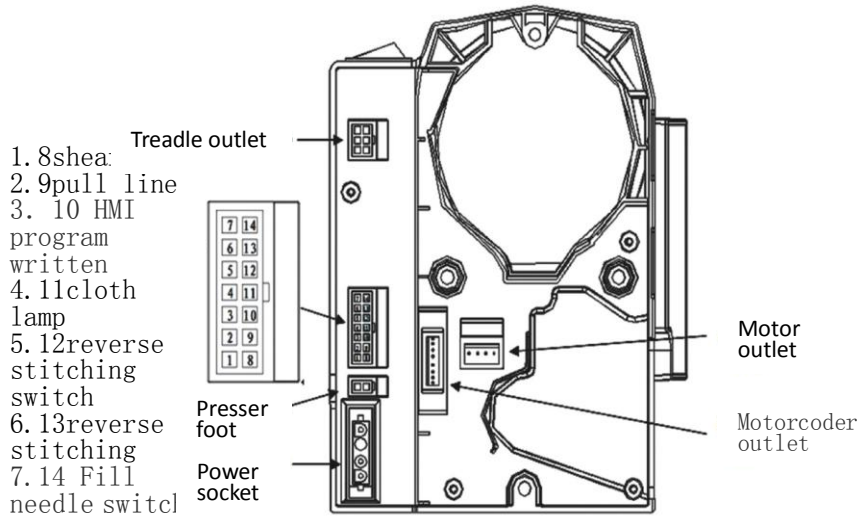
2.2 Adjustment of pedal

The parts of pedal are as shown in the right figure.

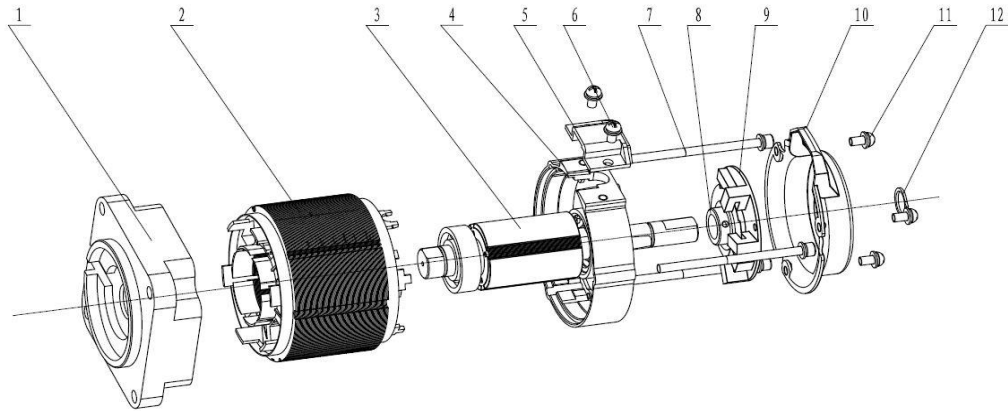
- A、Operation spring
- B、Bolt for heeling adjustment
- C、Pedal lever
- D、Ball joint link

P	Adjustment	Result
1	Adjustment of toeing force	Move spring A to the right to increase the toeing force. Move spring A to the left to reduce the toeing force.
2	Adjustment of heeling force	CCW ↺ turn the bolt to reduce the heeling force. CW ↻ urn the bolt to increase the heeling force.
3	Adjustment of pedal stroke	Secure the ball joint link D to the right hole to increase the pedal stroke. Secure the ball joint link D to the left hole to reduce the pedal stroke.

5.3 Electric wiring definition



6.electric machinery



N0	name	material	Amount	N0	name	material	Amount
1	The rear end cover	ADC12	1	7	Screw M4*70	steel	3
2	The stator assembly		1	8	Grating		1
3	The rotor assembly		1	9	Encoder		1
4	The rear end cover	ADC12	1	10	The rear housing	PA66	1
5	The cover plate	PA66	1	11	Screw M4*12	steel	3
6	Screw M4*8	steel	2	12	bead flange D12	steel	1

7. Error codes

Error Code	Contents	Possible reasons	Checking and treatment
E011 E012 E013 E014	Motor signal error	Motor position sensor signal failure	If electric engine plug is well contacted; if electric engine signal detecting device has been broken; if sewing machine handwheel correctly installed.
E015	Model type error	Unable identify operating box model type	Check operating box
E021 E022 E023	Motor overload	motor stall motor overload	If electric engine plug is well contacted; if machine head or thread-cutting mechanism has been blocked completely;f materials are too thick; Electrical signal detection signal whether the normal.
E101	Hardware drivers fault	Current detection abnormal Driving hardware error	Current detection loop system is working properly;Whether the damage to the device driver.
E111 E112	Voltage too high	High input voltage Brake circuit fault Voltage detection error	System into line voltage is too high;Braking resistance are working properly; System voltage detection circuit are working properly.
E121 E122	Voltage too low	Actual low voltage Voltage detection is wrong	If the voltage on the inlet wire is too low Whether the system voltage detection circuit the normal work.
E131	Current circuit fault	Current detection abnormal	Current detection loop system is working properly.
E133	Oz circuit fault	Oz circuit fault	Oz circuit system is working properly.
E151	Magnet circuit error	Over current magnet circuit	If machine head magnet suffers short circuit;Electromagnet circuit is working properly.
E201	over current	Current detection error	Current detection loop system is working properly;Electrical signal is normal.
E211 E212	Abnormal motor operation	Current or voltage detection error	If electric engine plug is well contacted;If electric engine signal is matched.
E301	Communication error	Sci circuit error	if operation box plug is well contacted;if operation box components are damaged.
E302	Operation inner failure	Sci circuit error	To check whether the operating box is damaged.
E402	Pedal ID fault	Pedal verification fault	Pedal connection is loosen.
E403	Pedal zero position fault	The pedal zero position over range	The pedal is damaged or it is not under stop state when correction.
E501	Safety switch fault	Safety switch effective	Put down the head or check turned up switch.
P.oFF	Power off Display	Power off	Wait for power supply to resume.
EvaL	Trial expired	Trial expired	Contact the dealer processing

Note: 1. Sewing abnormal action (speed electromagnet work abnormal) : in the control interface view model is correct;
2. Turn up E501 fault when: sure it is normal to switch detection, temporary use can change the P-28 parameters;
3. If the above according to check the project cannot rule out fault, please seek technical support.

8. Accessories

N0	Product name	Amount	Product specification	Remarks
1	Electric control box	1		
2	Ball section connecting rod	1		
3	pedal	1	PL-302	with bracket
4	bracket	3	M5*25	screw
5	instructions	2	Chinese / English version	
6	Power cord	1		